

Wednesday 6/01/2022



SUQUAMISH TRIBE INTERTIDAL CLAM HARVEST REGULATION

AFFECTED ORGANIZATIONS: DOH
REGULATION NUMBER: 22-055s clam

REGULATION SUPERSEDED/MODIFIED:

DATE ADOPTED: May 26, 2022
EFFECTIVE DATE: June 01, 2022

FISHERY TYPE: Commercial & Subsistence

SPECIES: Littleneck & Manila clams

LEGAL GEAR: Handheld fork or rake

SHELLFISH BEACH AND CATCH AREAS:

Catch Area:	26C
Growing Area:	Dyes Inlet
Harvest Location:	Chico Beach
BIDN:	CB90 CB91

**COVID-19 RESTRICTIONS
ARE IN EFFECT**

- Number of harvesters will be limited
- Harvesters must maintain 6 ft minimum distance
- Anyone exhibiting symptoms of illness will be asked to leave
- Refer to full protocols on fisheries website
- Maximum of 30 participants on the beach

HARVESTING SCHEDULE:

Wednesday, June 01, from 11:30 AM to 3:30 PM

- Check-in begins **11:00 AM**, **BLACK** and **RED** Groups have priority
 - There are thirty harvesters' slots available. Standbys admitted in group order.
- All diggers **MUST** register with the monitor and show their current fishing ID before start time.
- If you arrive after the dig start time, you will not be allowed to dig.
- Each digger must be a Suquamish Tribe member and possess a valid fisher ID card.
- Digger must harvest their IFQ from the beach they are assigned to by the monitor.

QUOTA: Approximately 3,000 lbs total, final determination made by the monitor

- In addition to the commercial IFQ, 25 lbs of subsistence littlenecks may be harvested

BUYERS: Buyers will purchase clams at the Chico boat launch. Buyer will not provide bags.

ACCESS: Boat access highly recommended. Foot access available from the Silverdale boat launch, walk 0.75 miles south. Do not trespass on private upland property.

HARVESTING REQUIREMENTS:

- Harvesters must abide by the **COVID-19 clam fishery protocols** as published on the [Suquamish Tribe website](#)



-
- Fishing Under the Influence of Intoxicants. Per Tribal Code 14.1.51 it shall be unlawful for any person to fish while in possession of or under the influence of alcohol or intoxicants. **Any violations will be strictly enforced.**
 - All diggers must have their Fisher ID card with a 2022 shellfish sticker in their possession and have paid all outstanding taxes in order to harvest.
 - Check-in with the monitor on the beach is required
 - Harvest is limited to clams 1.5 inches in length or greater
 - Diggers must thoroughly rinse clams prior to weigh out
 - Diggers must weigh their clams at monitor's station and receive bag tags before leaving beach
 - Displaced clams not kept must be returned to holes and all holes filled before leaving beach
 - It is unlawful to leave any litter on the beach
 - Trespassing on upland private property is a violation of this regulation

CATCH REPORTING:

The disposition (sale, gift, or consumption) of all clams harvested must be reported to fisheries department staff within 48 hours of the start of the harvest. In addition, all harvest must be reported on a fish ticket. A bag tag, available from the monitor, must be attached to each bag of clams once it leaves the beach.

TIME TO TEMPERATURE CONTROL:

All harvested clams must be sold within 18 hours of the close of the fishery OR maintained at 45°F or below within 20 hours of harvest by means of ice or approved wet storage. The only approved wet storage is at the Tribal Center beach.

TRANSPORTATION AND HANDLING:

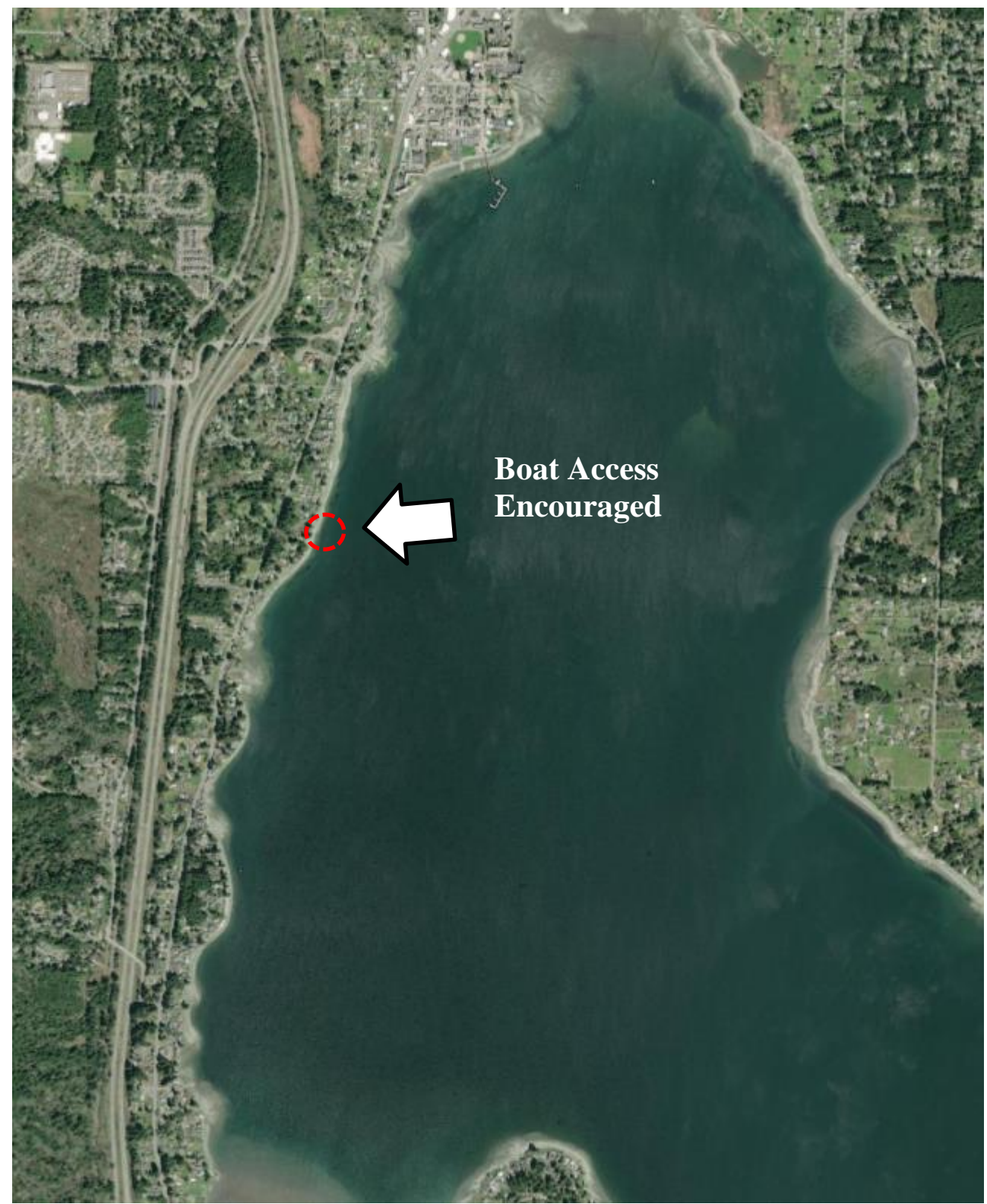
All clams must be protected from contamination at all times. Clams must not come into contact with non-food surfaces. Due to shellfish pest and disease control measures for Japanese Oyster Drill (Dyes Inlet – WAC 220-72-011(8)) harvested clams may not be transferred to another beach without a permit.

ENFORCEMENT OFFICERS:

Ryan George: 360-265-7511
Calvin Lehman 360-620-8477
Tim Mattila 360-900-9293

Suquamish Tribe Fisheries Department

PO Box 498,
Suquamish WA 98392



**Boat Access
Encouraged**