



.....

SUQUAMISH CRAB REGULATION

AFFECTED ORGANIZATIONS: WDFW, and AFFECTED TRIBES

DATE: May 19, 2026

REGULATION NUMBER 26-084

REGULATIONS MODIFIED: 26-083

SPECIES: Crab

FISHERY TYPE: Commercial and C&S

EFFECTIVE DATE: May 27, 2026

JUSTIFICATION: This regulation is made pursuant to Section 4.6 of the Shellfish Implementation Plan (April 8, 2002) to proceed with harvest in the absence of a state / tribes agreement for the 2026-2027 Region 2 East Crab Harvest Management Plan

HARVEST LOCATIONS, POT LIMITS AND -SEASONS BY REGION:

This regulation lists harvest areas, harvest openings and harvest restrictions for Suquamish tribal fishers. This regulation may be amended by subsequent emergency regulations.

Region 2 East

Commercial

MFSFCA 26AE and 24B – That portion of the Suquamish U&A in Possession Sound and Port Gardner Bay in Crustacean Management Areas 24B and 26AE that lie south of a line from the northern tip of Gedney Island, east to Priest Point (see attached map 1). Excluding from that area waters that overlies tidelands that constitute a portion of the Tulalip Indian Reservation (see attached map 2).

Open: 5:30AM Wednesday, May 27, 2026

Close: 5:30PM Thursday, May 28, 2026

Gear limit: 50 pots per boat

Harvest target for this opening: 1,400,000 pounds between all Tribes

EXPECTED EFFORT: 35 boats in all areas combined

Subsistence

MFSFCA 26AE and 24B south of a line drawn from Camano Head Southeast to Mission Point

Open on or after Thursday, May 14, 2026, exact dates and times will be determined in a subsequent regulation.

SUBSISTENCE LIMIT: Four pots and 6 crabs per ID holder per day unless otherwise noted. Harvesters must obtain a permit from the fisheries office.



HARVEST AREAS DESCRIPTION:

Region 2 East

Area 24B shall include those waters of Port Susan south of Area 24A and north of a line from Camano Head on Camano Island to the north tip of Gedney Island and from the southern tip of Gedney Island east to the mainland.

Area 26A-E is defined as contiguous waters of 26A north and east of a line from Possession Point to the shipwreck located 0.8 nautical miles north of Picnic Point.

GEAR:

- In Region 4, each unattended pot must be attached to a surface buoy which is neither red and white or yellow in color. In other regions, strings of pots may be attached to one buoy according to the specification for each regional management plan. The buoy must be clearly marked with the license holder's Tribal fishing identification number (58XXX). Lines attaching buoys to pots must be weighted sufficiently to prevent the line from floating on the surface.
- In other regions (as permitted in regional plans), each pot or string of pots (longline) must be attached to a surface buoy that is capable of floating a 5-pound weight. Buoys attached to gear used for commercial fishing can be any color or color combination except half red and half white. If red and white buoy colors are used, a minimum of 30% of the surface buoy(s) will be prominently marked with an additional color other than red and white. Buoys shall be conspicuously marked with a registered identification number.
- All crab pots must have two escape rings not less than 4 1/4 inches inside diameter. Escape rings must be located on the top half of the pot.
- Each pot must have a 3-inch by 5-inch biodegradable cord panel (natural fiber, maximum thread size 120 or approx. 1/8 inch) or a biodegradable loop attached to the pot lid hook
- Pots, ring nets, and hand-operated instruments that do not penetrate the shell are the only lawful gear for crab harvest.
- No crab gear shall be tended more than one half-hour before sunrise or more than one half-hour after sunset.

SIZE AND SEX LIMIT:

- Minimum size for male crab is 6 1/4 inches. Minimum size is measured using a caliper across the back at the widest part of the shell immediately in front of, but not including the outside of, the tips.
- Retention of female and soft-shelled crab is prohibited and must be released immediately.



OTHER RESTRICTIONS:

- No harvest one half hour before sunrise and one half hour after sunset is allowed.
- Fishers must have in their possession at all times a valid Suquamish fishing ID with current year shellfish sticker on the back.
- Subsistence and ceremonial harvest requires the issuance of a permit by the Suquamish Fisheries Department.
- All gear must be removed from the water prior to the time of the fishery closure.
- All crab retained for personal consumption or gifts must be recorded on fish tickets as take home.
- All crab rejected from the buyer must be recorded on fish tickets as weigh back.
- All non-legal crab must be returned to the water at the location where they were harvested. It is unlawful to discard crab anywhere else.

IN-COMMON RESTRICTIONS: In addition to those restrictions above, the following restrictions, which all Region 2 East Tribes are imposing for this opening, notwithstanding any contrary provisions in their respective tribal codes, all apply:

1. Barging of pots will only be permitted up to 1 hour prior to the fishery opening and after the close of the fishery. It is prohibited to barge pots or tow boats for the purposes of hauling within 1 hour prior to opening and during the fishery. Only operational vessels with functional conventional pot-pullers shall be used for transporting or fishing crab gear.
2. Each boat shall have 1 set of gear per boat, and no more than 50 registered tagged or zip-tied pots. Zip ties issued by the Tribe's Fisheries Office may only be used when tags are not available. All tribes with a pot tagging system in place shall use the appropriate tags for this fishery.
3. At least one buoy must be clearly marked per pot with the vessel number of the boat fishing registered to that gear, or the fisher's enrollment number.
4. All boats must set their own registered gear at the beginning of the fishery and must pick up their own registered gear at the end of the fishery. During the fishery, not including the initial drop and final pick up, a boat may run up to **two** sets of gear in summer (prior to Oct. 1) and up to three set of gear in the winter (after Sept. 30) as long as the registered owner or operator of that gear is on board the boat working the gear. Any adjustment to the timing of the summer and winter seasons will be reflected in updated regulations. In the instance of mechanical failure, fishers must immediately notify Enforcement. Enforcement will document any breakdown including any gear lifted from or remaining in the water. Another boat or Enforcement may lift the pots but the gear may not be redeployed. If another boat in the fishery assists the boat with a mechanical failure during the fishery, the boat with the mechanical failure may keep their crab. However, if Enforcement has to lift the pots, the crab may not be retained.
5. All gear shall be removed from the water prior to the time of fishery closure, subject to two narrow exceptions. First, if gear cannot be lifted from the water prior to closure because of a mechanical failure, fishers must immediately notify Enforcement. Enforcement will document any



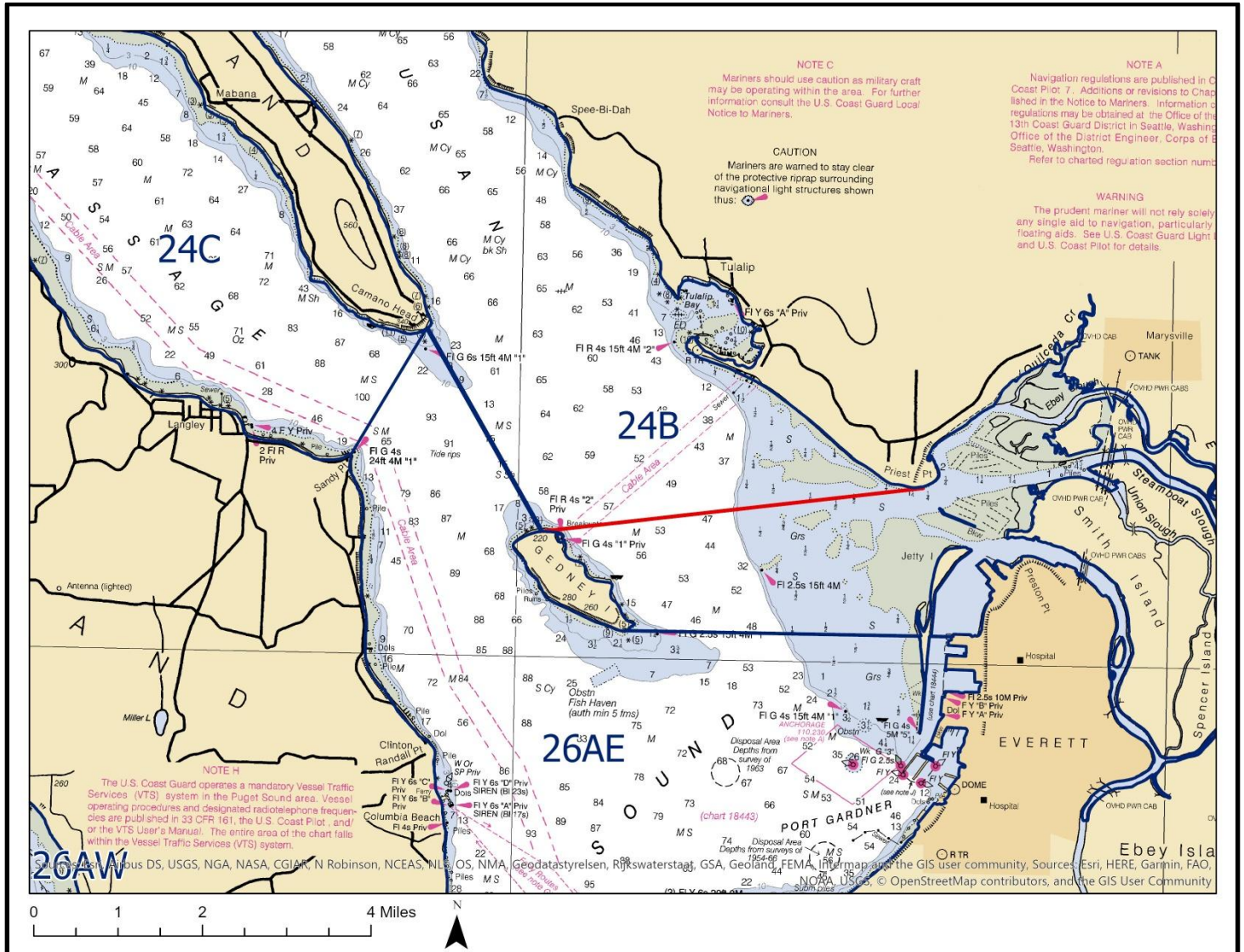
breakdown including any gear lifted from or remaining in the water. Another boat or Enforcement may lift the pots but the gear may not be redeployed. Second, if weather, wind speeds, or waves over 3 feet would make it unsafe for a boat to transport the pots, that fisher must immediately notify Enforcement. Their gear can remain in the water in non-fishing condition until it is safe to transport within a 24-hour period after the closure of the fishery.

6. Fishers shall not have crab on board a vessel while recovering pots after closure of the fishery.
7. It is unlawful to have on board a vessel, purchase or attempt to sell a female crab or male crab less than 6.25 inches measure across the back in front of the horns.
8. It is unlawful to have on board a vessel, purchase or attempt to sell soft crab.
9. There shall be no crab in transit to a buyer more than 4 hours after the close of a fishery unless otherwise notified by the fisher to Enforcement for delays due to late closures, weather, or mechanical failure requiring transit of crab to occur 4 hours after the close of the fishery.

All manners of fishing pursuant to the Suquamish Fisheries Ordinance Chapter 14.

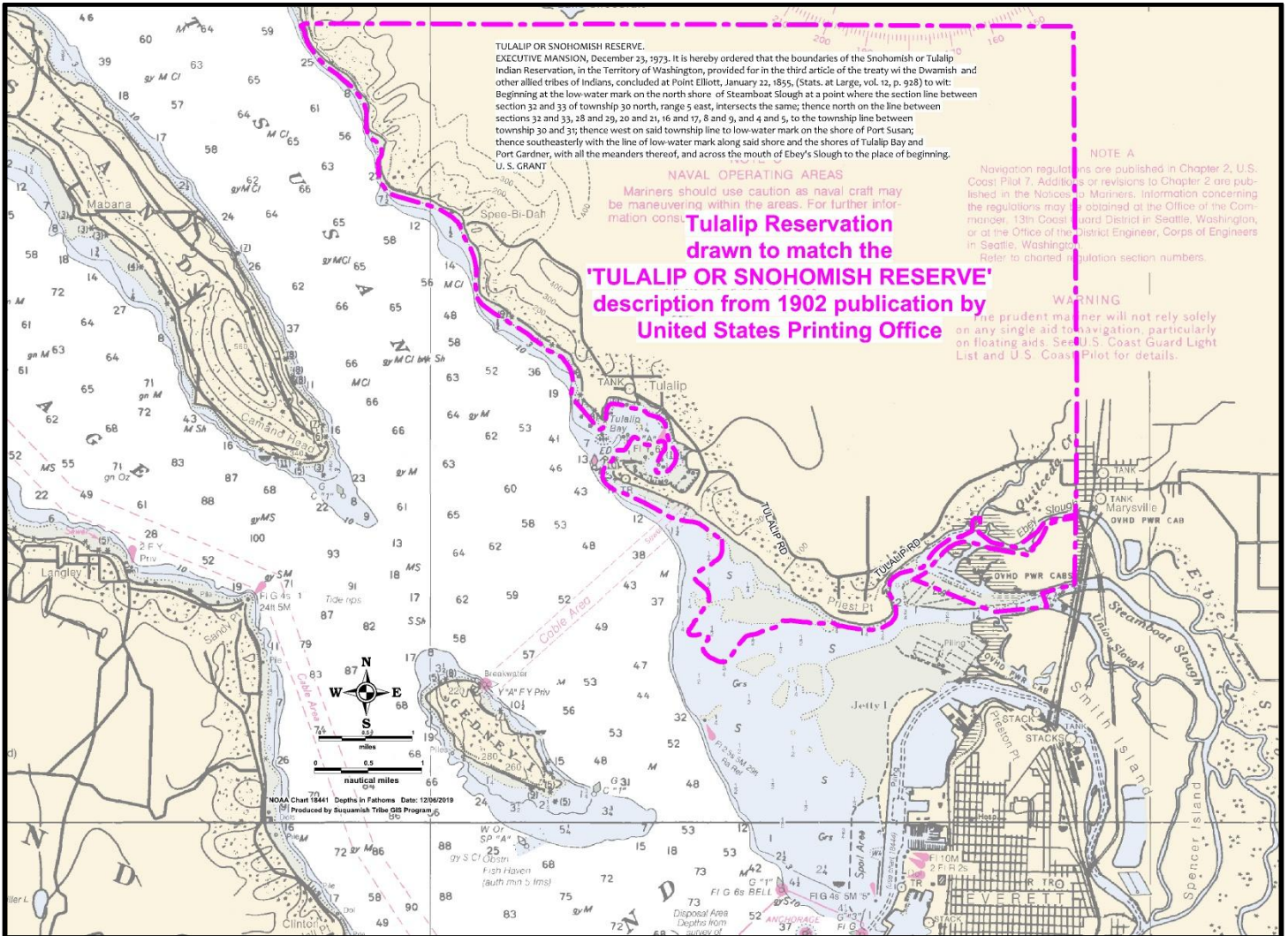


MAP 1





MAP 2



ENFORCEMENT CONTACT:
 Ryan George
 360-265-7511